

## **Historic, Archive Document**

**Do not assume content reflects current scientific knowledge, policies, or practices.**



62,57

210302

INDEXED

# CUMBERLAND NURSERIES

LIBRARY  
RECEIVED  
★ FEB 15 1930 ★



LOCATION  
MILLVILLE — BRIDGETON PIKE

Post Office Address  
MILLVILLE, N. J.

## INTRODUCTION

•••



**T**HIS BUSINESS, started ten years ago, has grown steadily and without a large appropriation for advertising.

For this we have to thank former customers and friends. We appreciate their kindness and hope to continually merit the good words they have spoken.

Our stock today is larger and better than it ever has been in the years past, and we know we can please anyone who intrusts their business to us.

Newer varieties of plants have been added from time to time until we can safely say we have most of the good and worth while plants.

We have endeavored to keep prices at a low figure for the quality of the stock offered.

We solicit your patronage.

Respectfully,

**CUMBERLAND NURSERIES**  
**MILLVILLE, N. J.**

Post Office  
Address  
Millville, N. J.

Telegraph and  
Telephone  
Bridgeton, N. J.  
829-J-1.

## INSTRUCTIONS TO PURCHASERS

**NOTE**—One to four trees or plants of one variety sold at the each rate; five to thirty of one variety at the ten rate; thirty to three hundred at the hundred rate; three hundred or more at the thousand rate.

**ORDERS.** Should be sent in as soon as possible after receiving catalog. By ordering early you are more certain of getting the varieties wanted. If ordered early we will reserve the stock until you want it shipped. Orders will be acknowledged promptly.

**SHIPPING SEASON.** We begin filling orders about October 15th in fall, and March 1st, in spring. The proper planting season is from March 1st to May 15th in spring and from October 15th to December 1st, in fall, Evergreens may be planted two months later in spring and a month earlier in fall.

**PACKING.** We make no extra charge for boxing or packing. All stock will be delivered to transportation companies at prices quoted in catalog.

**TERMS:** Cash with order is required; but orders will be booked on receipt of one fourth of the purchase price, balance before shipment.

**SHIPMENTS.** We endeavor to make all shipments as soon as practicable after receipt of order. Notice will be sent you when order is shipped.

**GUARANTEE:** We guarantee all stock we sell to be strictly first class in the different grades and True to Name, dug and packed properly for shipment. We will replace any that shall prove otherwise or refund the purchase price, but, we will not be held responsible for any greater sum than the cost price of the stock. We strive to avoid mistakes.

**IMPORTANT.** We cannot guarantee plants to live, as this depends altogether on weather conditions and the manner in which stock is planted, and cared for after planting.

**LIABILITY.** We are not liable for damage to stock in transit. After we deliver stock to forwarding companies in good condition and receive their receipt our responsibility ends. Claims for damage must be made against forwarding companies. Have agent note damage on express or freight bill. Keep all papers until damage is settled. We will help you when we can do so. Keep us advised.

**SUBSTITUTION:** When sold out of the variety ordered it is customary to substitute another of equal merit. If you do not want us to do so, please state No Substitution.

**CLAIMS.** If any, must be made within five days of receipt of goods.

**WHEN YOU RECEIVE MORE THAN ONE CATALOG,** please hand one to your neighbor.

## EVERGREENS

All evergreens have been transplanted two or more times

**ABELIA GRANDIFLORA.** Bush arbutus. Dwarf. Glossy green foliage. Constant bloomer. 18 in., 75c each; 2 ft., \$1.00 each.

**AZALEA AMOENA.** Bright rosy purple flowers. 10-12 in., \$2.00 each; 12-15 in., \$2.50 each.

**AZALEA HINODEGIRI.** Beautiful red flowers. Light green foliage. 10-12 in., \$2.00 each; 12-15 in., \$2.50 each.

**BIOTA ORIENTALIS.** Chinese arbor vitae. Columnar habit, light green foliage. 18 in., \$1.00 each; 24 in., \$1.50 each.

**BIOTA ORIENTALIS ROSEDALE.** Very soft light green foliage. 10-12 in., 75c each; 12-15 in., \$1.00 each.

**BIOTA ORIENTALIS NANA AUREA.** Berckman's Golden A. V. A gem for dwarf planting, compact shape; golden yellow foliage. 10-12 in., \$1.50 each; 12-15 in., \$2.50 each.

**BUXUS SEMPERVIRENS.** Standard tree boxwood. Can be trimmed to formal shapes. 12 in., \$1.00 each; 18 in., \$1.75 each; 24 in., \$2.00 to \$3.00 each

**BUXUS SUFFRUTICOSA.** Dwarf boxwood. Suitable for border edging. 4-6 in., 25c each; 6-8 in., 50c each. Prices in quantity on application.

**EUONYMUS JAPONICA.** Evergreen burning bush. Shiny deep green leaves. 12-15 in., 50c each; 15-18 in., 75c each; 18-24 in., \$1.00 each.

**EUONYMUS JAP. AUREA MARGINATUS.** Very Dwarf, leaves edged golden. 6-8 in., 50c each.

**EUONYMUS JAP. AUREA VARIEGATUS.** Leaves golden in center. 12-15 in., 75c each.

**EUONYMUS RADICANS.** Winter creeper. Leaves green. 2 ft., \$1.00 each.

**EUONYMUS RAD. VARIEGATA.** Variegated winter creeper. 2 ft., \$1.00 each.





AN EVERGREEN PLANTING

**EUONYMUS VEGETUS.** Big leaf winter creeper. Leaves dark green. 12-15 in., 75c each; 15-18 in., \$1.00 each.

**ILEX CRENATA.** Japanese holly. Deep green box like leaves. Black berries. 15-18 in., \$1.50 each; 18-24 in., \$2.00 each; 24-30 in., \$2.50 each.

**ILEX OPACA.** American holly. Does best in moist, partly shaded places. 18-24 in., \$1.50 each; 2 ft., \$2.00 each.

**JUNIPERUS CANADENSIS.** Canadian juniper. Leaves dark green, silvery beneath. A low spreading tree. 18-24 in., \$1.50 each; 2 ft., \$2.00 each.

**JUN. COLUMNARIS.** Chinese Columnar juniper. Erect rapid grower. Leaves gray green. 18-24 in., \$2.00 each; 24-30 in., \$3.00 each.

**JUNIPERUS EXCELSA STRICTA.** Greek juniper. Dwarf well shaped pyramid. Gray green silvery foliage. 10-12 in. \$1.00 each; 12-15 in., \$1.50 each; 18-21 in., \$2.50 each.

## CUMBERLAND NURSERIES, MILLVILLE, N. J.

---

**JUNIPERUS HIBERNICA.** Irish juniper. 18-24 in., \$1.50 each; 24-30 in., \$2.00 each.

**JUNIPERUS PFITZERIANA.** Pfitzers Juniper, a broad bushy habit, with a gray-green, feathery foliage. A most adaptable evergreen. 15 in. spread, \$1.50 each; 18-24 in., \$2.00 each.

**JUNIPERUS SUECICA.** Swedish Juniper. Dwarf. Light green foliage. 15-18 in., \$1.00 each; 18-24 in., \$1.50 each; 24-30 in., \$2.50 each.

**JUNIPERUS VIRGINIANA.** Red cedar. Tall pyramid. 18-24 in. \$1.00 each; 2-3 ft., \$1.50 each; 3-4 ft., \$2.00 each.

**JUNIPERUS VIRGINIANA GLAUCA.** Blue cedar. 15-18 in., \$1.50 each; 18-24 in., \$1.75 each; 24-30 in., \$2.50 each.

**LEUCOTHOE CATESBEI.** Drooping leucothoe. Fine for under planting. 15-18 in., \$1.50 each; 18-24 in., \$2.00 each.

**LONICERA NITIDA.** Evergreen Bush Honeysuckle. 2-3 ft., \$1.50 each.

**PICEA CANADENSIS.** White spruce. Silvery foliage. Shapely plants. 18-24 in., \$1.50 each; 2-3 ft., \$2.00 each; 3-4 ft., \$3.00 each.

**PICEA EXCELSA.** Norway spruce. Well known rapid growing evergreen. 18-24 in., \$1.50 each; 2-3 ft., \$2.00 each; 3-4 ft., \$3.00 each.

**PICEA PUNGENS.** Colorado spruce. Makes finely shaped specimens. 18-24 in., \$2.00 each; 24-30 in., \$2.50 each. Plants with blue foliage at prices according to color.

**PINUS DENSIFLORA.** Japanese red pine. Dark green foliage. Long needles. 18-24 in., \$1.50 each; 24-30 in., \$2.25 each.

**PINUS MUGHUS.** Mugho pine. Very dwarf. Useful for foundation work. 12-18 in., \$2.00 each; 18-24 in., \$3.00 each.

**PINUS AUSTRIACA.** Austrian pine. 18-24 in., \$2.00 each; 24-30 in., \$3.00 each.

**PINUS RESINOSA.** Norway red pine. Light green soft foliage. 18-24 in., \$1.50 each.

**PINUS STROBUS.** White pine. Silvery soft foliage. Upright growing tree. 18-24 in., \$1.50 each; 24-30 in., \$2.00 each.

**PINUS SYLVESTRIS.** Scotch pine. Handsome tree with dark green slightly twisted foliage. 18-24 in., \$1.50 each; 24-30 in., \$2.00 each.

**PSEUDOTSUGA DOUGLASI.** Douglas fir. Dark bluish green foliage. A handsome tree. 18-24 in., \$1.50 each; 2-3 ft., \$2.00 each.

**RETINOSPORA OBTUSA CRIPPSI.** Bright golden foliage. 12-15 in., \$2.00 each; 15-18 in., \$3.00 each.

**RETINOSPORA COMPACTA.** Football cypress. 15-18 in., \$2.00 each; 18-24 in., \$2.75 each.





BACK YARD PLANTING

**RETINOSPORA PISIFERA.** Sawara cypress. 18-24 in., \$2.00 each; 24-30 in., \$2.75 each.

**RETINOSPORA PIS. AUREA.** Golden sawara cypress. 18-24 in., \$2.25 each.

**RETINOSPORA PLUMOSA.** Green plume cypress. Fine dense foliage. Stands shearing. 18-24 in., \$2.00 each; 24-30 in., \$2.50 each.

**RETINOSPORA PL. AUREA.** Golden plume cypress. Similar to above. 18-24 in., \$2.00 each; 24-30 in., \$2.50 each.

**RETINOSPORA PLUMOSA LUTESCENS.** Dwarf. Light golden cypress foliage. 10-12 in., \$1.50 each; 12-15 in., \$1.75 each.

**RETINOSPORA SQUARROSA VEITCHI.** Moss cypress. Very soft blue green foliage. 15-18 in., \$1.50 each; 18-24 in., \$2.00 each.

## CUMBERLAND NURSERIES, MILLVILLE, N. J.

---

**RHODODENDRON MAXIMUM.** Rosebay. Large handsome foliage. 18-24 in., \$3.00 each. 24-30 in., \$4.00 each.

**TAXUS BACCATA REPANDENS.** Spreading English yew. Dwarf. Rich green foliage. 12-15 in., \$2.50 each; 15-18 in., \$3.00 each.

**TAXUS CANADENSIS.** Canadian yew. Dwarf. Dark green foliage. 12-15 in., \$2.00 each; 15-18 in., \$2.50 each.

**TAXUS CUSPIDATA.** Japanese yew. Spreading form. Dark green foliage. 12-15 in., \$2.25 each; 15-18 in., \$2.75 each.

**THUJA OCCIDENTALIS.** American arborvitae. Pyramidal grower with broad base. 2-3 ft., \$1.50 each; 3-4 ft., \$2.50 each.

**THUJA O. COMPACTA.** Parsons arborvitae. Almost globe shaped, bridge green foliage. 12-15 in., \$1.50 each; 15-18 in., \$2.00 each.

**THUJA O. ERICOIDES.** Heath leaved A. V. Soft feathery foliage. 15-18 in., \$1.25 each; 18-24 in., \$1.75 each.

**THUJA GLOBOSA.** Globe Arbor Vitae; light green foliage. Grows in ball or globe-shape, dwarf. 12-15 in., \$1.50; 15-18 in., \$2.00 each.

**THUJA O. HOVEYI.** Hoveys A. V. Bright green leaves. Oval shape. 12-15 in., \$1.50 each; 15-18 in., \$2.00 each.

**THUJA O. LUTEA.** George Peabody A. V. Golden yellow leaves. 15-18 in., \$2.00 each.

**THUJA O. PYRAMIDALIS.** Pyramidal A. V. Bright green foliage. Good winter color. 18-24 in., \$1.75 each; 2-3 ft., \$2.25 each.

**THUJA ROSENTHALI.** Rosenthal A. V. Dense rugged evergreen, slow grower. 15-18 in., \$2.00 each; 18-24 in., \$2.50 each.

**THUJA WAREANA.** Siberian A. V. Dark green fleshy foliage. Broadly Pyramidal. 15-18 in., \$1.50 each; 18-24 in., \$2.00 each.

**TSUGA CANADENSIS.** Canada hemlock. Very graceful spreading evergreen. 18-24 in., \$2.00 each; 24-30 in., \$3.00 each.

We have evergreens of larger size than these quoted. Sizes and prices will be given on application.



MIXED PLANTING

DECIDUOUS SHRUBS

	Each	10	100
18 to 24 inch .....	\$ .25	\$2.00	\$15.00
2 to 3 feet .....	.35	3.00	25.00
3 to 4 feet .....	.50	4.00	35.00
4 to 5 feet .....	.75	6.00	50.00

**AMORPHA FRUTICOSA.** False Indgo. Spreading habit; chocolate colored flowers in June.

**AMYGDALUS NANA.** Flowering Almond. Double flowers of pink or white in May. 2-3 feet, 50c each.

**AZALEA NUDIFLORA.** Pinxter Flower. Pink honeysuckle flowers in June. 12-15 in., \$1.00 each; 15-18 in., \$1.50 each.





**HYDRANGEA GRANDIFLORA**

## CUMBERLAND NURSERIES, MILLVILLE, N. J.

---

**AZALEA VISCOSA.** Swamp Azalea. Fragrant white flowers in July. 12-15 in., \$1.00 each; 15-18 in., \$1.50 each.

**BUDDLEIA VEITCHIANA.** Butterfly Bush. Gray green foliage and lilac like flowers in August and September.

**CALYCANTHUS FLORIDUS.** Sweet Shrub. Reddish flowers, fragrant.

**CARAGANA ARBORESCENS.** Siberian Pea Tree. Fine clover like foliage and yellow pea shaped bloom. Early.

**CERCIS CANADENSIS.** American Red Bud. Rosy pink flowers before the leaves appear. Grows to good size.

**CERCIS CHINENSIS.** Chinese Red Bud. Dwarf, bushy growth. Flowers brighter. Leaves darker green. 2-3 ft., 50 cents each.

**CLETHRA ALNIFOLIA.** Summersweet. Flowers very sweet scented in August.

**COLUTEA ARBORESCENS.** Bladder Senna. Yellow flowers June-August. Curious bladder like seed vessels.

**CORNUS ALBA.** Coral Dogwood. White flowers; blue fruits; red bark.

**CORNUS PANICULATA.** Gray Dogwood. White flowers in May. Fruits white on red stems. Attractive. 2-3 ft., 50 cents each.

**CORNUS LUTEA.** Golden Barked Dogwood. Valuable for its yellow bark in winter.

**CORNUS SANGUINEA.** Blood Twig Dogwood. Valuable for its scarlet bark in winter.

**CYDONIA JAPONICA.** Flowering Quince. Flowers in April and May before the leaves appear. 2-3 ft., 50c each; 3-4 ft., 75c each.

**DEUTZIA CANDIDISSIMA.** Snowflake Deutzia. Double white flowers in June.

**DEUTZIA CRENATA FLORA PLENA.** Double Pink Deutzia.

**DEUTZIA GRACILLIS.** Slender Deutzia. Dwarf habit. Single white flowers. 10-12 in., 35c each; 12-18 in., 50c each.

**DEUTZIA PRIDE OF ROCHESTER.** Large Flowered Deutzia. Flowers double white tinted pink.

**ELEAGNUS LONGIPES.** Cherry Eleagnus. Dark green leaves, silvery reverse. Flowers yellow. Fruit scarlet, good size. 2-3 ft., 50c each.

**ELEAGNUS UMBELLATA.** Autumn Eleagnus. Similar to the above. Stronger grower. Fruit ripens in fall.

## CUMBERLAND NURSERIES, MILLVILLE, N. J.

---

**EUONYMUS ALATUS.** Winged Euonymus. Corky bark. Deep green foliage. 1½ feet, 50c each.

**EXOCHORDA GRANDIFLORA.** Pearl Bush. Pure white single flowers in clusters in May. Good foliage.

**FORSYTHIA INTERMEDIA.** Border Golden Bell. Bright yellow flowers in May before leaves appear.

**FORSYTHIA SUSPENS.** Weeping Forsythia. Flowers lighter colored.

**FORSYTHIA VIRIDISSIMA.** Green Barked Forsythia. Dwarf grower.

**HAMAMELIS VIRGINICA.** Witch Hazel. Yellow flowers in October.

**HIBISCUS.** Mallow Marvels. Single red, white or pink flowers.

**HIBISCUS SYRIACUS.** Rose of Sharon. Single flowers in various colors.

**HIBISCUS BOULE DE FEU.** Double red flowers.

**HIBISCUS ARDENS.** Double lavender flowers.

**HIBISCUS ELEGANTISSIMA.** Double pink flowers.

**HIBISCUS JOAN OF ARC.** Double white flowers.

**HYDRANGEA ARBORESCENS.** Smooth Hydrangea—Single white flowers in July.

**HYDRANGEA GRANDIFLORA.** Hills of Snow. Snowball like bloom in June. 1½ ft., 35c; 2-3 ft., 50c each.

**HYDRANGEA OTAKSA.** Shiny green leaves. Pink or blue flower. 50c to \$1.00 each.

**HYDRANGEA PANICULATA GRANDIFLORA.** Pee Gee Hydrangea. Well known autumn flowering shrub. 1½ ft., 35c; 2-3 ft., 50c each.

**JASMINUM NUDIFLORUM.** Winter Jasmine. Yellow flowers in April before leaves appear. 1½ ft., 35c; 2-3 ft., 50c each.

**LESPEDEZA BICOLOR.** Hardy Bush Clover. Pink pea shaped flower in fall.

**LESPEDEZA FORMOSA.** Bush Clover. Purple pea like bloom in fall.

**LIGUSTRUM REGALIANUM.** Regals Privet. Low spreading, dark green foliage. Very desirable shrub.

**LIGUSTRUM OVALIFOLIUM AUREA.** Golden Privet. Leaves golden variegated. 1 foot, 25c each.





**HYDRANGEA PANICULATA GRANDIFLORA**

**LONICERA BELLA ALBIDA.** (White Bell Honeysuckle) Vigorous grower.

**LONICERA FRAGRANTISSIMA.** Fragrant, blooms very early, sometimes in winter. Curious twin shaped fruits.

**LONICERA MAACKI.** Amur Honeysuckle. Large white flowers in June. Scarlet berries until winter. 2-3 ft., 50c each.

**LONICERA MORROWI ALBA.** Morrows Honeysuckle. White flowers in June. Red fruits.

**LONICERA MORROWI.** Pink and blush flowers in June. Red berries.

**OXYDENDRON ARBOREUM.** Sourwood. Graceful panicles of white flowers in August. Good dark green foliage. Brilliant autumn coloring. 3-4 feet, 75c each; 4-5 feet, \$1.00 each.

## CUMBERLAND NURSERIES, MILLVILLE, N. J.

---

**PHILADELPHUS BOUQUET BLANC.** Mock Orange. Dwarf habit. Blooms freely. 2-3 feet, 50c each.

**PHILADELPHUS CORONARIUS.** Sweet Mock Orange. Creamy white fragrant flowers in May and June.

**PHILADELPHUS GORDONIANA.** Gordon Mock Orange. Large white flowers; slightly fragrant; gray bark. June and July.

**PHILADELPHUS GRANDIFLORA.** Large Flowered Mock Orange. White flowers. Strong upright grower.

**PHILADELPHUS VIRGINALIS.** Virginal Mock Orange. Beautiful semi-double flowers. Valuable. 2-3 feet, 50c each.

**PHOTINIA VILLOSA.** Red Berried Photinia. Splendid foliage; good grower. Flowers white. Red berries until frost.

**PRUNUS TRILOBA.** Double Flowering Plum. Attractive double pink blooms in abundance. April-May. 2-3 ft., 50c.; 3-4 ft., 75c.

**RHODOTYPHUS KERRIOIDES.** Jetbead. Pure white single flowers in May-June. Pleasing light green foliage. Black berries. 2-3 ft., 50c; each; 3-4 ft., 75c each.

**ROSA RUGOSA.** Red Rugosa Rose. Pink flowers June-July. Rich green foliage and large red fruits.

**SORBARIA AITCHISONI.** Kashmir False Spirea. Graceful foliage and spikes of white bloom. July-September. 2-3 ft., 50c; 3-4 ft., 75c each.

**SORBARIA SORBIFOLIA.** Ural False Spirea. Fluffy heads of bloom in June-August. 2-3 ft., 50c; 3-4 ft., 75c each.

**SPIREA ANTHONY WATERER.** Deep, rose pink flowers, blooming nearly all year. Dwarf growing. 1½ ft., 35c; 2-3 ft., 50c each.

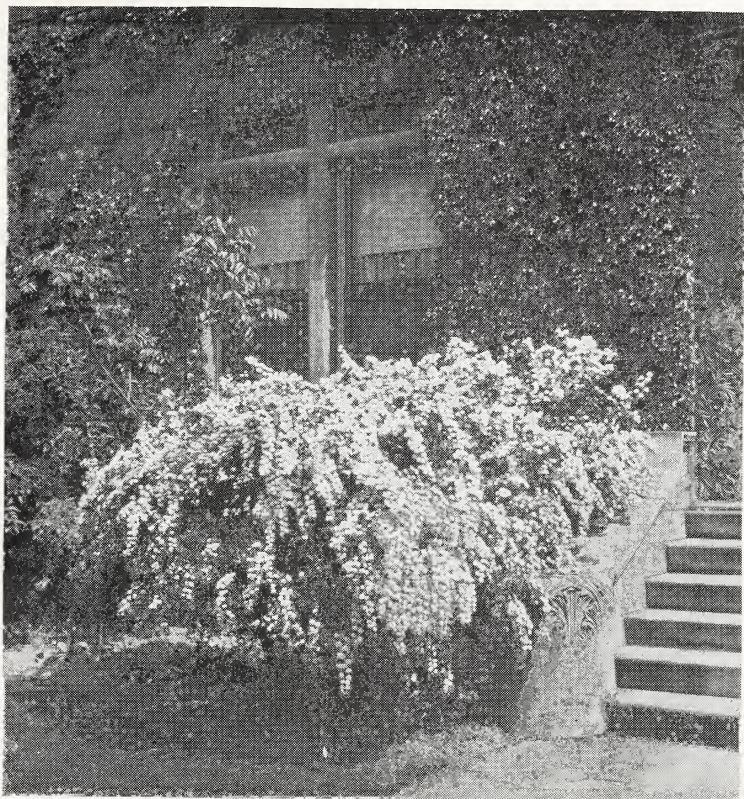
**SPIREA COLLOSA ROSEA.** Attractive, rose colored blooms.

**SPIREA FROEBELIA.** Froebels Spirea. Habit of growth similar to Anthony Waterer. Foliage slightly different. Flowers darker. 1½ ft., 35c each.

**SPIREA BETHLEMITE.** Flowers similar to Billiardi. Leaves darker.

**SPIREA BILLIARDI.** Billiards Spirea. Upright bush. Spikes of rosy pink flowers.

**SPIREA REEVESIANA.** Reeves Spirea. More upright in habit than Van Houttei. Flowers white in clusters.



**SPIREA VAN HOUTTEI**

**SPIREA THUNBERGI.** Thunbergi Spirea. Dwarf in habit. Very fine light green foliage. Flowers white before leaves. 1½ ft., 35c; 2-3 ft., 50c.

**SPIREA VAN HOUTTEI.** Van Houtte Spirea. Branches weeping. White flowers in abundance. The best of spireas.



## CUMBERLAND NURSERIES, MILLVILLE, N. J.

---

**SYMPHORICARPUS CHENAULTI.** New. 1½ ft., 50c each.

**SYMPHORICARPUS RACEMOSUS.** White Snowberry. Dwarf grower. Attractive habit. White flowers.

**SYMPHORICARPUS VULGARIS.** Red Snowberry. More bushy than preceding. Red berries through winter.

**SYRINGA PERSICA.** Persian Lilac. Purple, pink and white varieties. Similar to Chinensis.

**SYRINGA VULGARIS.** Common Purple Lilac. Well known shrub should be planted around every home. 2-3 ft., 50c; 3-4 ft., 75c each.

**SYRINGA VULGARIS.** French varieties. 2-3 ft., 75c.; 3-4 ft., \$1.00; 4-5 ft., \$1.25 each.

Chas. X. Single, reddish purple.

Ludwig Spaeth. Single, red.

Marie le Graye. Single, white.

Mme. Lemoine. Double, white.

Wm. Robinson. Double, violet pink.

Hugo Koster. Blue.

**TAMARIX AFRICANA.** African Tamarix. Feathery dark green foliage. Pink flowers in April-May.

**TAMARIX INDICA.** Indian Tamarix. Tall grower, dark green foliage, light pink flowers. June.

**TAMARIX ODESSANA.** Odessa Tamarix. Bluish green foliage and pale pink flowers. Late.

**VIBURNUM DENTATUM.** Arrow Wood. White flowers in clusters. Blue black berries. 2-3 ft., 50c; 3-4 ft., 75c each.

**VIBURNUM OPULIS.** European Cranberry Bush. White flowers and red berries. 2-3 ft., 50c; 3-4 ft., 75c each.

**VIBURNUM STERILIS.** Snowball. Well known shrub, in much demand. 2-3 ft., 50c; 3-4 ft., 75c each.

**VIBURNUM PLICATUM.** Japanese Snowball. Leaves dark green, rugose. Flowers creamy white, fading white. 2-3 ft., 50c; 3-4 ft., 75c each.

**WEIGELA AMABILIS.** Rose Weigela. Pink and white flowers. Strong growing shrub.

**WEIGELA EVA RATHKE.** Crimson Weigela. Dwarf grower. Flowers abundant. 1½ ft., 35c; 2-3 ft., 50c each.

**WEIGELA FLORIBUNDA.** Dark red flowers; tall grower, desirable.

**WEIGELA ROSEA.** Pink Weigela. Rose colored bloom. Dwarf grower.

**WEIGELA VARIEGATA.** Rose colored bloom. Variegated leaves.



VIBURNUM PLICATUM (Japanese Snowball)



BARBERRY HEDGE

## BARBERRY THUNBERGI

This is not the variety of Barberry which spreads wheat rust, and can safely be planted.

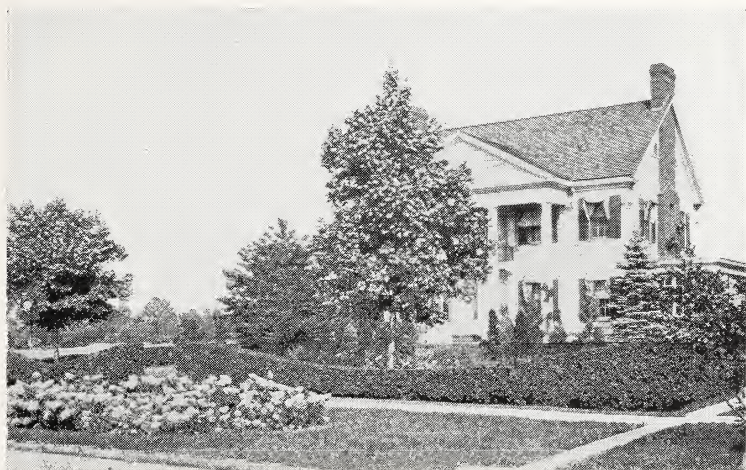
Planting instructions for Barberry are the same as for California Privet when planting it for a hedge, except that it should be set 12 to 15 inches apart. For lawn planting, instructions same as other shrubs.

Our stock of Barberry has been twice transplanted, and is strictly first class, well branched and heavily rooted.

	each	10	100
2 year 12 to 18 inches .....	\$ .15	\$1.00	\$9.00
2 year 18 to 24 inches .....	.25	2.00	17.50
3 year 18 to 24 inches .....	.35	2.50	20.00

**BARBERRY THUNBERGI PURPUREUM.** Purple japan Barberry. 25c to \$1.00 each.





## CALIFORNIA PRIVET

One of the leading hedge plants and undoubtedly the largest planted of them all; its foliage produces abundantly the deepest, richest green, almost an evergreen; does not shed its foliage until late winter and then only in an exposed condition.

All grades listed below are heavy rooted and well branched.

	10	100	1000
12 to 18 in. ....	\$ .50	\$3.00	\$20.00
18 to 24 in. ....	.60	4.00	30.00
2 to 3 ft. ....	.80	6.00	50.00
3 to 4 ft. ....	1.00	7.00	65.00

## GLOBE SHAPED PRIVET

This is California Privet carefully sheared in perfect balls.

	Each	10
Size 6 in by 6 in. ....	\$ .60	\$5.00
Size 8 in. by 8 in. ....	.75	7.00
Size 10 in. by 10 in. ....	1.00	9.00
Size 12 in. by 12 in. ....	1.50	10.00

## LIGUSTRUM-IBOLIUM

### NEW HARDY PRIVET

		10	100
Size 18 to 24 in. ....	\$1.00		\$6.00

## REGEL PRIVET

	Each	10	100
2 to 3 feet .....	\$ .20	\$1.50	\$12.50
3 to 4 feet .....	.25	2.00	17.50

Everyone who appreciates beauty wants an outdoor living room. We are offering as a special inducement the following assortment of shrubs which will fill a corner 18 ft. on the side, if planted 4 ft. apart.

1 Laburnum (Golden Chain) 3-4 ft.....	\$1.00	} <b>SPECIAL OFFER</b>
2 Golden Bell, 3-4 ft. ....	1.00	
2 Mock Orange, 3-4 ft. ....	1.00	
2 Bridle Wreath, 3-4 ft. ....	1.00	
1 Japanese Snowball, 2-3 ft. ....	.50	
2 Anthony Waterers Spirea, 15-18 in. ....	1.00	
1 Dwarf Deutzia, 18 in. ....	.50	
2 Rose flowered Weigela, 3-4 ft. ....	1.00	
2 Pink Rose of Sharon, 2-3 ft.....	.70	
<b>Total Value</b>	<b>\$7.70</b>	<b>No 1</b> <b>Transplanted</b> <b>Stock</b> <b>15 Shrubs</b> <b>\$6.50</b>

Fill in that corner near the house with evergreens.

We offer a selection of twice-transplanted evergreens which are sure to prove satisfactory.

1 Pyramidal Arbor Vitae, 18-24 in. ....	\$1.75	} <b>SPECIAL OFFER</b>
2 Globe Arbor Vitae, 12-15 in.....	3.00	
1 Pfitzers Juniper, 15 in. spread .....	1.50	
1 Green Plumed Cypress, 15-18 in. ....	1.50	
1 Golden Plumed Cypress, 15-18 in. ....	1.50	
<b>Total Value</b>	<b>\$9.75</b>	<b>No. 2</b> <b>All six for</b> <b>\$8.00</b>



ROSES

## ROSES

### Hybrid Teas or Everblooming

Fall Planting of Roses is no longer an experiment. It is being done successfully in many sections of the country.

New varieties of roses are continually appearing.

We aim to grow the newer kinds as soon as possible.

Write us of your requirements, we doubtless have the varieties you want.

**BETTY.** Coppery rose overlaid with ruddy gold. Buds pointed.

**COLUMBIA.** Peach blow pink.

**CRIMSON QUEEN.** Velvety crimson. Buds pointed.

**EDEL.** Ivory white.

**ELDORADO.** Golden yellow.

**ETOILE de FRANCE.** Vivid crimson.

**FRANCIS SCOTT KEY.** Crimson red.

**GENERAL McARTHUR.** Crimson scarlet.

**GEORGE W. WAUD.** Orange and vermillion.

**GORGEOUS.** Deep orange yellow.

**GRACE MOLINEUX.** Creamy apricot and flesh.

**GRANGE COLOMBE.** Ivory white.

**GRUSS AND TEPLITZ.** Deep crimson.

**H. V. MACHIN.** Bright crimson red.

**INDIANA.** Red.

**J. L. MOCK.** Carmine rose.

**KAISERIN.** Lemon white.

**KILLARNEY QUEEN.** Cerise pink.

**KONIGEN CAROLA.** Soft silvery pink.

**LA FRANCE.** Bridge pink.

**LADY ASHTOWN.** Pale carmine pink.

**LADY HILLINGDON.** Apricot yellow.

**LADY STANLEY.** Coral pink.



- LADY URSULA. Delicate flesh pink.  
LAURENT CARLE. Brilliant carmine red.  
MDME. BUTTERFLY. Pink and apricot.  
MDME. CAROLINE TESTOUT. Light silvery pink.  
MDME. JULES BOUCHE. Pearly white.  
MRS. A. R. WADDELL. Apricot yellow and orange.  
MRS. CHRISSIE McKELLER. Primrose yellow.  
MRS. W. C. MILLER. Silvery rose.  
RADIANCE. Silvery flesh pink.  
RED RADIANCE. Bright red.  
SOUV. CLAUDIUS PERNET. Lemon yellow.  
SOUV. de GEORGES PERNET. Oriental red.  
WHITE KILLARNEY. White.

Prices, 60c each, \$5.00 per 10.

### Hybrid Perpetual Roses

- FRAU KARL DRUSCHKI. Snow white.  
HUGH DICKSON. Velvety crimson.  
MAGNA CHARTA. Rose.  
PAUL NEYRON. Clear pink.  
MRS. JOHN LAING. Silvery pink.

50c each, \$4.00 per 10.

### Climbing Roses

- AMERICAN PILLAR. Bright crimson, white eye.  
CL. AMERICAN BEAUTY. Rich carmine.  
DR. VAN FLEET. Flesh pink.  
EMILY GREY. Golden yellow.  
GARDENIA. Golden yellow.  
MARY WALLACE. Bright rose pink.  
PAULS SCARLET. Vivid scarlet.  
ROSIERE. Red.  
SILVER MOON. Pure white.

50c each, \$4.00 per 10.

## PEONIES

Price 50 cents each, unless noted. Prices quoted are for strong 3 to 5 eye divided clumps. Undivided clumps priced on application.

**DELACHEI.** Very good red. Late midseason.

**EDULIS SUPERBA.** Rose pink, early.

**EDOUARD ANDREE.** Crimson maroon with rich golden center. Mid-season.

**FELIX CROUSSE.** Very popular red. Midseason; 75 cents each.

**FESTIVA MAXIMA.** Very popular white. Early.

**FLORAL TREASURE.** Large pink. Early.

**FRANCOIS ORTEGAT.** Deep crimson. Fragrant. Midseason.

**GOLDEN HARVEST.** Soft pink with yellow collar. Midseason.

**KARL ROSEFIELD.** Rich velvety crimson. Midseason, 75c each.

**LORD KITCHENER.** Bright red. Very early. 75c each.

**MAD. CALOT.** Very good pink. Early.

**MONS. JULES ELIE.** Large early pink.

**QUEEN VICTORIA.** Very good white. Midseason.

**RUBRA SUPERBA.** Very late crimson red.

**REINE HORTENSE.** Soft flesh color. Midseason. \$1.00 each.

**TRIOMPHE de L'EXPOSITION de LILLE.** Light shell pink. Midseason.

**WALTER FAXON.** One of the very best pinks. Midseason. \$2.00 each.

## IRIS

We have ten varieties of German Iris that are priced at 10c each.



## DECIDUOUS TREES

**ACER DASYCARPUM.** Silver Maple. Quick growing graceful shade tree. Leaves silvery beneath. 8-10 ft., \$1.00; 10-12 ft., \$1.50 each.

**ACER NEGUNDO.** Box Elder. Will grow in any situation. 8-10 ft., \$1.00 each; 10-12 ft., \$1.50 each.

**ACER PLATANOIDES.** Norway Maple. Dense spreading tree. Most popular street tree. 8-10 ft., \$2.50 each; 10-12 ft., \$3.50 each.

**ACER RUBRUM.** Scarlet Maple. Has red bloom in early spring. Vivid fall coloring. 8-10 ft., \$2.00 each; 10-12 ft., \$3.00 each.

**ACER SACCHARUM.** Sugar Maple. Lighter foliage and more upright grower than Norway Maple. 8-10 ft., \$2.50 each; 10-12 ft., \$3.50 each.

**AESCULIS HIPPOCASTANUM.** Horse Chestnut. Slow grower. Very attractive in bloom. 5-6 ft., \$1.50 each; 6-8 ft., \$2.00 each.

**AMYGDALUS PERSICA.** Double Flowering Peach. Very attractive red, white and pink flowering trees for lawns. 4-5 ft., 50c each.

**BETULA ALBA.** White Birch. A very desirable tree for lawn planting. 5-6 ft., \$1.00 each; 6-8 ft., \$1.50 to \$2.00 each.

**CATALPA BUNGEII.** Umbrella Catalpa. Popular round headed tree. \$1.50 to \$2.00 each.

**CELTIS OCCIDENTALIS.** Hackberry. Similar foliage and habit to elms. Not so strong a grower. 8-10 ft., \$1.50.

**CORNUS FLORIDA.** White Flowering Dogwood. Low growing trees having white bloom in spring. 2-3 ft., 75c each; 3-4 ft., \$1.00 each.

**CORNUS FLORIDA RUBRUM.** Pink Flowering Dogwood. Similar to above. Flowers pink. B. B. 18-24 in, \$2.00; 2-3 ft., \$2.50 each.

**FAGUS AMERICANA.** American beech. 3-4 ft., \$1.50 each; 4-5 ft., \$2.50 each.



**CATALPA BUNGEII**

**FAGUS SYLVATICA.** English Beech. Tree with dense green foliage. Slow grower. Broad pyramidal outline. 6-7 ft., \$4.00 each.

**FAGUS SYLVATICA RIVERSI.** Rivers Beech. More upright in habit than type, with purple foliage. 5-6 ft., \$3.50 each; 6-7 ft., \$5.00 each.

**FAGUS SYLVATICA PENDULA.** Weeping Beech. Tall growing tree with very pendulous branches. 4-5 ft., \$3.50 each.

**FRAXINUS AMERICANA.** American Ash. Fairly rapid grower. Good fall coloring. Likes moist situations. 6-8 ft. \$1.25 each; 8-10 ft., \$1.75 each.

**FRAXINUS ORNUS.** European Flowering Ash. Low growing tree. Fragrant feathery bloom in spring. 6-8 ft., \$1.50 each; 8-10 ft., \$2.00 each.

## CUMBERLAND NURSERIES, MILLVILLE, N. J.

---

**GINKGO BILOBA.** Maidenhair Tree. Picturesque tree with leaves shaped like maidenhair fern. 5-6 ft., \$1.00 each.

**LARIX EUROPENS.** Larch. Fast growing tree with evergreen-like foliage. 2-3 ft., 75c; 3-4 ft., \$1.00 each.

**LIQUIDAMBER STYRACIFLUA.** Sweet Gum. Beautiful fall coloring. Grows well in moist soils. 5-6 ft., \$1.50 each.

**LIRIODENDRON TULIPIFERA.** Tulip Tree. A quick growing tree with shiny green foliage and yellow tulip like flowers. 6-8 ft., \$1.00 each.

**MALUS.** Flowering crap apple.

**Atrosanguinea.** Red flowers.

**Floribunda.** Japanese flowering Crab.

**Ioensis Plena.** Betchel's Crab. Double, rose bloom.

**Parkmanni.** Semi-double. Rosy pink.

**Scheideckeri.** Double pink.

} 2-3 ft., 75c ea.

} 3-4 ft., \$1.00 ea.

**MORUS ALBA.** Russian Mulberry. A small growing tree with fine foliage and bearing fruit. Suitable for chicken runs. 6-8 ft., 75c each.

**MORUS ALBA PENDULA.** Weeping Mulberry. The finest of the weeping trees. \$1.50 to \$2.00 each.

**PLATANUS ORIENTALIS.** Oriental Plane. A quick growing tree with maple-like leaves. 6-8 ft., \$1.25; 8-10 ft., \$1.75 each. Also larger sizes.

**POPULUS ALBA.** Silver Leaved Poplar. Useful for seashore planting. 6-8 ft., \$1.00 each; 8-10 ft., \$1.50 each.

**PHELLODENDRON.** Chinese Cork Tree. 6-8 ft., \$1.00 each; 8-10 ft., \$1.50 each.

**POPULUS NIGRA ITALICA.** Lombardy Poplar. Tall spire-like outline. Good for screens. 5-6 ft., 50c; 6-8 ft., 75c; 8-10 ft., \$1.00 each.

**POPULUS SAUVEOLENS.** Mongolian Poplar. A quick growing tree with dense maple-like head. Hold leaves until frost. \$1.50 to \$5.00.

**PRUNUS CERASIFERA.** J. H. Veitch. Double rose flowering cherry. Double rose colored blooms in clusters. 4-5 ft., \$3.50 each.

**PRUNUS CERASIFERA.** Weeping Cherry, 1 year head, \$3.50 each.

**QUERCUS COCCINEA.** Scarlet Oak. Strong grower; good fall coloring. Shiny green foliage. 3-4 ft., 50c; 5-6 ft., \$1.00 each.

## CUMBERLAND NURSERIES, MILLVILLE, N. J.

---

**QUERCUS RUBRA.** Red Oak. Quick grower. Rich autumn colors. 3-4 ft., 50c; 5-6 ft., \$1.00 each.

**SALIX BABYLONICA.** Babylonian Weeping Willow. Probably the best of the weepers. 5-6 ft., 50c; 6-8 ft., 75c each.

**SALIX CAPREA.** Pussy Willow. Large purplish catkins in early spring. 5-6 ft., 50c each.

**SALIX INCANA.** Rosemary Willow. A shrubby willow of good form and sharp narrow grayish leaves. 4-5 ft., \$1.00 each.

**SALIX PENTANDRA.** Laurel Leaved Willow. Lustrous light green leaves. Very attractive. 4-5 ft., 75c each.

**SALIX VITELLINA AUREA.** Golden Willow. Grows into a good sized tree with golden bark. Conspicuous in winter. 4-5 ft., 75c each.

**SORBUS AUCUPARIA.** European Mountain Ash. A valuable small tree with orange colored fruits. 6-8 ft., \$1.00; 8-10 ft., \$1.50 each.

**TILIA AMERICANA.** American Linden. A large growing tree, with large heart-shaped leaves 6-8 ft., \$1.50 each; 8-10 ft., \$2.00 each.

**TILIA VULGARIS.** Common Linden. Medium size tree. 6-8 ft., \$1.50; 8-10 ft., \$2.00 each.

**ULMUS AMERICANA.** American Elm. Fairly rapid growth. 6-8 ft., 75c each.

**ULMUS PUMILA.** Chinese Elm. Rapid grower. Rounded head. 6-8 ft. \$2.00 each.

**ULMUS GLABRA.** Scotch Elm. More upright in growth than the preceding. Not quite so large at maturity. 6-8 ft., 75c each.

## APRICOT TREES

**EARLY GOLDEN.** Large size, orange skin, and flesh. The best apricot. July.

4-5 feet ..... 75c each, \$6.00 per 10

## APPLE TREES

**CRIMSON BEAUTY.** Highly colored. Early. Good quality.

**DELICIOUS.** Winter apple. Keeps well, color red and yellow, fine grained; and quite juicy, flavor slightly acid, but very good.

**GRAVENSTEIN.** Large. Red striped. Fall.

**GRIMES GOLDEN.** Very large, skin golden yellow; flesh tender and crisp. A very good fall apple.

**HYSLOP.** (Crab Apple). Large, handsome, crimson, splashed with dark red.

**McINTOSH.** Medium size, nearly covered with a bright red flesh; yellowish, tender, juicy, sub-acid. October to February.

**MAIDEN BLUSH.** One of the most beautiful; pale lemon with crimson cheek; flesh white, tender and crisp. October.

**ROME BEAUTY.** Large; roundish, slightly conical, with bright red on a pale yellow ground; fine grained, juicy, good quality.

**STAYMAN'S WINESAP.** Winter. A profitable sort to grow for market, and the best for home use. Large in size, fine appearance, good flavor, juicy and crisp, color red. A great success.

**WEALTHY.** Fall. Almost solid red. Flesh white, tender, crisp, juicy, fine grained.

**WILLIAMS EARLY RED.** Among the earliest to ripen and the largest of all early apples. Flesh is white, and slightly tart, like Transparent.

**WINESAP.** Medium to large size. Red color; flesh yellow; firm crisp, with rich flavor, quality very good. November to May.

**YELLOW TRANSPARENT.** Summer. Fruit medium to large, with a brilliant waxy skin; flesh is tender, crisp and juicy, color yellow.

## PRICES OF APPLE TREES

### Two and Three Year

	Each	10	100
First class, 5-6 feet .....	\$5.50	\$4.00	\$35.00
Second class, 4-5 feet .....	.40	3.00	25.00
Third class, 3-4 feet .....	.30	2.00	18.00

## PEACH TREES

We are offering only a limited number of varieties, ones that you can depend on giving you a good crop of fruit. We do not think it worth while to propagate a large number of varieties, when a few of the best varieties will make more money for our customers. The peach crop is quite sure if you give your trees proper attention. To succeed in growing fruit, first of all plant good trees, give them correct pruning, frequent spraying, proper cultivation, good fertilizing, careful picking and attractive packing; by so doing your orchard will give you profit year after year. For spraying instructions, consult your County Agent or Experiment Station in your state.

**BELLE OF GEORGIA.** Ripens here the first to fifteenth of August. Fruit is large, white with red cheek; flesh white, firm, of excellent flavor.

**CUMBERLAND.** Similar to Carman. Better quality and freestone.

**ECLIPSE.** Yellow, freestone. Ripens with Hiley.

**ELBERTA.** Mid-season. A valuable large peach, of good quality; fruit large, yellow with red cheek; juicy and extremely high flavored; flesh yellow; freestone.

**FOX SEEDLING.** Freestone. Fruit is very large and of good quality and flavor.

**GREENSBORO.** Large in size; white in color with a red cheek. Flesh rich and melting.

**GOLDEN JUBILEE.** Early yellow. Large.

**HILEY.** Ripens about a week before the Belle of Georgia, also a seedling of the Belle. A large creamy white peach with rich blush on sunny side. Freestone.

**IRON MOUNTAIN.** Ripens September 1st. Freestone. Fruit is of large size, color white.

**J. H. HALE.** Fruit is very large, round, quality excellent. Skin yellow, finely colored, flesh yellow, sweet and melting.

**KRUMMEL.** Freestone. Fruit is quite large, fine flavor, skin yellow, splashed with red.

### PRICES OF PEACH TREES

	Each	10	100
5-6 feet .....	\$3.35	\$3.00	\$25.00
4-5 feet .....	.30	2.50	20.00
3-4 feet .....	.25	2.00	18.00



## PEAR TREES

**ANJOU.** Large, handsome, yellow. Late Fall.

**BARTLETT.** Season last of August to September 15th. Good strong grower, flesh is white, fine grained, luscious, large and buttery.

**BOSC.** Large, yellow, buttery rich. Fall.

**CLAPP'S FAVORITE.** Summer. Fruit large, yellow lemon color, spotted with brown dots; flesh fine, rich and sweet. A very good one.

**DUTCHESS.** Strong grower, productive, not subject to blight. Fruit large, light green patched with russet, melting, juicy, sweet and good. Fall.

**KIEFFER.** One of the most prolific pears. It is an abundant and regular bearer. Fruit large, color yellow with red cheek.

**LAWRENCE.** Medium, yellow with brown dots, melting, pleasant, aromatic. Late Fall.

**SECKEL.** Medium size, skin rich, yellowish brown with deep brownish red cheek when fully ripe; flesh very fine grained, sweet, exceedingly juicy, melting, buttery.

First Class .....75c each, \$6.00 per 10.

## PLUM TREES

**ABUNDANCE.** Fruit very large and showy; flesh light yellow, exceedingly juicy, tender and sweet.

**BURBANK.** Fruit very large; dark violet red; flesh juicy and pleasant. Ripens middle of August. Productive.

**GREEN GAGE.** Skin pale green. Excellent.

**GERMAN PRUNE.** Dark purple or blue, juicy, rich, of best quality. September.

**SHROPSHIRE DAMSON.** Medium size, purple fruit, produced in thick cluster or groups. October.

First class .....75c each, \$6.00 per 10

Second class .....60c each, \$5.00 per 10

## QUINCE TREES

**CHAMPION.** Tree strong grower; produces a good crop every year. Fruit large of good quality. Cooks as tender as an apple. October.

**ORANGE.** Good size. Heavy bearer. Flesh orange yellow.  
2 years 4-5 feet .....75c each, \$6.00 for 10

## CHERRY TREES

### SWEET CHERRIES

**BLACK TARTARIAN.** Black, very large, rich and sweet. Productive.

**GOVERNOR WOOD.** Yellow with red cheek; tender, rich, delicious, very fine, large, roundish, depresses at stem; productive, early.

**NAPOLEON.** Yellow, tinged with red. Good shipper.

**SCHMIDT'S BIGGAREAU.** Flesh tender, juicy, good flavor. Mahogany color.

**YELLOW SPANISH.** Ripens early in June.

	each	10
2 year 4-5 feet first class .....	\$1.00	\$9.00
2 year 5-6 feet X .....	\$1.25	10.00

### SOUR CHERRIES

**EARLY RICHMOND.** Medium to large. Dark red, juicy, good flavor. June.

**MONTMORENCY.** Medium to large. Dark red, juicy, good flavor. Late.

2 year 3½-5 feet ..... 75c each; \$6.50 per 10

## NUT TREES

Nut trees are valuable, useful and ornamental. No home should be without them. They are valuable as shade and ornamental trees, as well as for the nuts they produce.

**BUTTERNUT.** Tree makes very rapid growth, and bears heavily of large, longish nuts. Very pleasing for its sweet, oily, nutritious kernel. 3 to 4 feet \$1.00 each.

**ENGLISH WALNUT.** Well known, justly popular, very hardy, will stand the extreme cold, produces abundantly. 3 to 4 ft. \$1.00 each.

**JAPAN WALNUT.** Very hardy, makes quick growth, bears abundantly when young, produces large nuts. 2 to 3 ft., \$1.00 each.

**PECAN.** Well known, justly popular. 2 to 3 ft., \$1.00 each.

## GRAPE VINES

**AGAWAM.** Deep red or maroon. Fruit large and meaty, borne in extra large, loose shouldered bunches.

**BRIGHTON.** One of the best of the red varieties; bunch variable in size; flesh tender and juicy.

**CACO.** A new variety. It is wine-red with abundant bloom; the berries are very large; bunches medium in size, compact and of good form. Ripens almost with Concord, 75c each.

**CONCORD.** The most popular black variety of grape in America. The bunch is large, shouldered and compact, skin is tender, flesh juicy and sweet.

**DELAWARE.** Vine moderately healthy and vigorous. Bunch small but compact, berries small to medium in size, red in color and of excellent flavor.

**ELVIRA.** Color white. Vine strong grower, large bunches.

**IVES.** Black. Very hardy and productive. Ripens earlier than Concord.

**MOORE'S DIAMOND.** Ripens early, just before Moore's Early. Prolific grower. Berries large greenish white, juicy and of good quality.

**MOORE'S EARLY.** Ripens before Concord. Color of grapes deep black. Large and of best quality.

**NIAGARA.** The most popular white grape. Clusters large and compact; berry large, amber white with white bloom. Ripens in mid-season with Concord.

2 year No. 1 ..... 25c each, \$2.00 per 10, \$15.00 per 100.

## GOOSEBERRIES

**DOWNING.** One of the old reliable varieties. Fruit is quite large, pale green in color, and of splendid quality.

**HOUGHTON.** Red. The berries are of medium size, and the plants are extremely hardy and healthy.

	each	10	100
2 year No. 1 .....	\$ .25	\$2.00	\$15.00

## BLACKBERRIES

**BLOWERS.** Claimed to be the hardiest and most productive. Large size, jet black; good shipper.

**HIMALAYA.** Late. Needs tying. Profitable.

	each	10	25	100	1000
1 year .....	\$.15	\$.60	\$1.25	\$4.00	\$30.00
2 year .....	.20	1.50	2.50	7.00	60.00

## RASPBERRIES

Coming immediately after strawberries, when there is a dearth of other fresh fruit, raspberries are much sought after for planting in the garden and also in the field for market. Plant four feet apart each way.

**CUMBERLAND.** Produces large jet black fruit, firm and of excellent quality; ripening in mid-season.

**CUTHBERT.** Red. Heavy yielder of large solid fruit. Plant is a very vigorous grower.

**LATHAM.** Red. A giant in growth and size of fruit.

**PLUM FARMER.** The largest of all black raspberries. Quality of fruit unsurpassed.

**ST. REGIS.** (Everbearing). Ripens with the earliest and continues on young canes until autumn. Color red.

### PRICES OF LATHAM AND CUTHBERT RASPBERRIES

	each	10	25	100	1000
1 year .....	\$ .12	\$ .70	\$ 1.25	\$ 4.00	\$ 35.00
2 year .....	.16	1.25	2.25	7.00	60.00

### PRICES OF OTHER VARIETIES OF RASPBERRIES

	each	10	25	100	1000
1 year .....	\$ .10	\$ .60	\$ 1.00	\$ 3.00	\$ 25.00
2 year .....	.15	1.00	2.00	6.00	50.00

## RHUBARB OR PIE PLANT

**MYATT'S LINNEAEUS.** Early, large, tender and of good quality.

	each	10	25	100	1000
2 year No. 1 .....	\$ .10	\$ .90	\$ 2.00	\$ 6.00	\$ 50.00

## ASPARAGUS ROOTS

**MARY WASHINGTON.** A new variety, claimed by many to be the best one of them all.

	25	100	1000
2 year No. 1 .....	\$ 1.00	\$ 2.50	\$ 15.00
1 year No. 1 .....	.80	1.25	8.00



YOU ARE CORDIALLY INVITED  
TO  
VISIT OUR NURSERY



AND  
INSPECT OUR PLANTS

# Cumberland Nurseries

MILLVILLE, NEW JERSEY



MEMBER:

National Association of Nurserymen

New Jersey Association of Nurserymen